

4-wheel electric tow tractor

TE250R

Towing Capacity 25000 kg

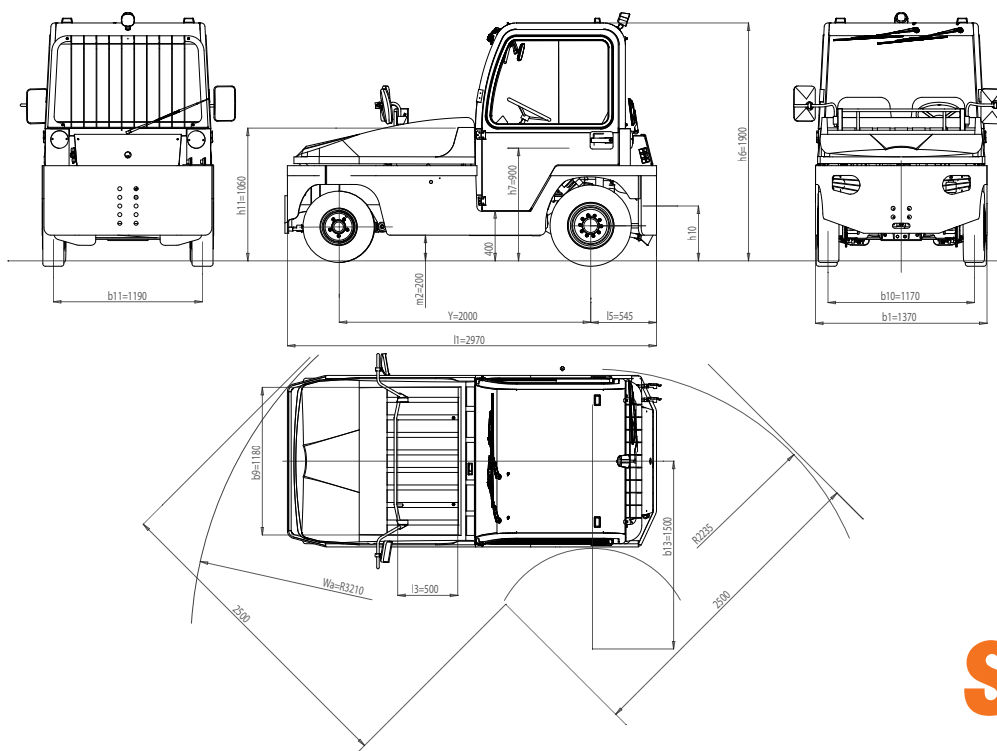


4-wheel tow tractor, man on board. Heavy-duty high-performance and long-range truck for industrial and airport duties. Despite its small size and turning radius, the TE250R has a high towing capacity. Driving position is located backwards ensuring optimum weight distribution and excellent stability. Loading capacity of front platform 80 kg.

- “Shock resistant” **supporting perimeter chassis** ensures maximum exploitation of induction motor torque.
- **Suspensions:** steel coil springs, stabiliser bar and shock absorbers in the front and in the rear.
- **Drum service brake** acting on 4 wheels - with twofold braking system. Front disk brakes and rear oil-bath multiple-disk brakes. Mechanical lever-type parking brake - negative hydraulic brake available upon request. Preset electrical **braking**, operating automatically when accelerator pedal is released, with first stroke of brake pedal and on reversing direction.
- Standard hydraulic **steering**.
- **2 operators on board.** Comfortable driving position ensures excellent visibility both to the front and to the rear towing hitch.
- **“Man on board” device** with seat occupancy sensor. Available in basic version, with weather protection roof with front windscreen and electric wipers. PVC canvas doors or cab with hinged side doors available.

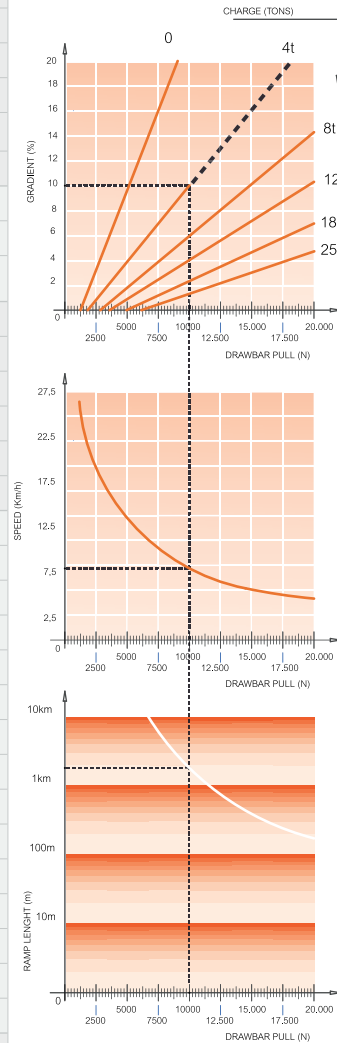
- **Lighting system:** 2 front lights (position/dipped-beam/main-beam), 2 front turn indicators, 2 rear turn indicators, 2 rear lights (position/brake lights), 2 reversing lights. Horn. Flashing light and blue lights available upon request.
- **Digital dashboard** with battery charge indicator, fault detection, speedometer and hour meter. 24 V DC/DC converter for auxiliary services.
- **Induction motor** with through shaft integrated into driveline.
- **Electronic speed control of AC motor** with energy recovery during deceleration and braking. Several towing hitches available. Rear inching control to ease coupling operations.
- **Battery** 80 V – available capacity 500Ah, 560Ah and 620Ah. Battery in the front of the driver's cab for fast replacement from above. Standard paint finish: chassis dark grey RAL 7021/body light grey RAL 7035. Other colours available upon request.

All parts are easy to access for fast and effective maintenance. Lower costs due to AC technology and modular design.



FEATURES	1.1	Manufacturer				SIMAI S.p.A.
	1.2	Model				TE250R
	1.3	Drive				Electric
	1.4	Operator Type				Sitting driver
	1.5	Load Capacity	Q	t		0,1
	1.5.1	Towing Capacity	Q	t		25
	1.7	Rated Drawbar pull	F	N		5400
	1.9	Wheelbase	Y	mm		2000
	WEIGHT	2.1	Service weight (w/battery)		kg	
2.2		Axle loading laden front/rear (with operator 80 kg. each)		kg		1811 / 2178
2.3		Axle loading unladen front/rear		kg		1721 / 2008
TIRES, CHASSIS	3.1	Tyres:Cushion(Cu),Superelastic(SE), Pneus(Pn) Poliurethane (PE)				SE/Pn
	3.2	Tyre size front				6.50-10
	3.3	Tyre size rear				7.00-12
	3.5	Wheels nr. Front/Rear (X=motive)				2/2X
	3.6	Tread front	b ₁₀	mm		1170
	3.7	Tread rear	b ₁₁	mm		1190
	DIMENSIONS	4.7	Height of roof/cabin	h ₆	mm	
4.8		Seat height	h ₇	mm		900
4.8.1		Step on platform height		mm		400
4.12		Coupling height	h ₁₀	mm		310 - 380 - 450 - 520
4.13		Loading height (min / MAX)	h ₁₁	mm		1060
4.16		Platform length	l ₃	mm		500
4.17		Rear overhang	l ₅	mm		545
4.18		Platform width	b ₉	mm		1180
4.19		Overall length	l ₁	mm		2970
4.21		Overall width	b ₁	mm		1370
4.32		Ground clearance - centre of wheelbase	m ₂	mm		200
4.35		Turning radius front	Wa	mm		3210
4.35.1		Turning radius rear		mm		2235
4.36		Turning radius inner	b ₁₃	mm		1500
4.36.1		Aisle width when turning 90°		mm		2500
PERFORMANCES	5.1	Travel speed laden/unladen		Km/h		12 / 25
	5.5	Drawbar pull laden		N		-
	5.5.1	Drawbar pull unladen		N		5400
	5.6	Max. Drawbar pull laden/unladen		N		- / 20000
	5.7	Gradeability laden/unladen		%		See chart
	5.8	Max. Gradeability laden/unladen		%		See chart
	5.10	Service / Parking brake (I=Hydraulic E=Electromagn. M=Mechanical)				I / M
	5.10.1	Type of service brake front/rear				disk / mult. disks
MOTOR	6.1	Drive motor rating S2=60 min		kW		20
	6.1.1	Hydrauling steering motor rating S2=60 min		kW		1
	6.3	Battery according to DIN 43531 / 35 / 36 A, B, C, no				no
	6.4	Battery voltage	U	V		80
	6.4.1	Battery rated capacity	K _s	Ah		500 - 560 - 620
	6.5	Battery weight		kg		1300 - 1430 - 1565
	6.6	Energy consumption (VDI cycle)		kWh/h		-
OTHER DATA	8.1	Drive Control				Inverter AC
	8.4	Sound level at driver's ear according to DIN 12053		dB(A)		69
	8.5	Towing coupling, type DIN				-

READING EXAMPLE:
 CHARGE = 4 TONS
 GRADIENT = 10 %
 DRAWBAR PULL = 10,000 N
 SPEED = 8 Km/h
 MAX PRACTICABLE RAMP LENGHT = 1800 m



As per VDI guidelines 2198, this datasheet applies to standard electric tractor / platform truck only.

Dimensions are not binding and can be changed in any moment. The performances must be intended for brand new machines, after having completed the running-in tested in San Donato Milanese Factory in normal climatic conditions. Performances and weight are to be intended with standard motors and battery (reported in bold) and with pneumatic tires. Some data can vary according to different equipments.

Simai S.p.A.

Via Civesio, 10 • 20097 S. Donato Milanese (MI) • Italy
 T +39 02 5278541 • F +39 02 5278544 • info@simai.it • www.simai.it



Simai

05E0418