

Electric Platform Truck

PE15

Loading Capacity 1500 kg

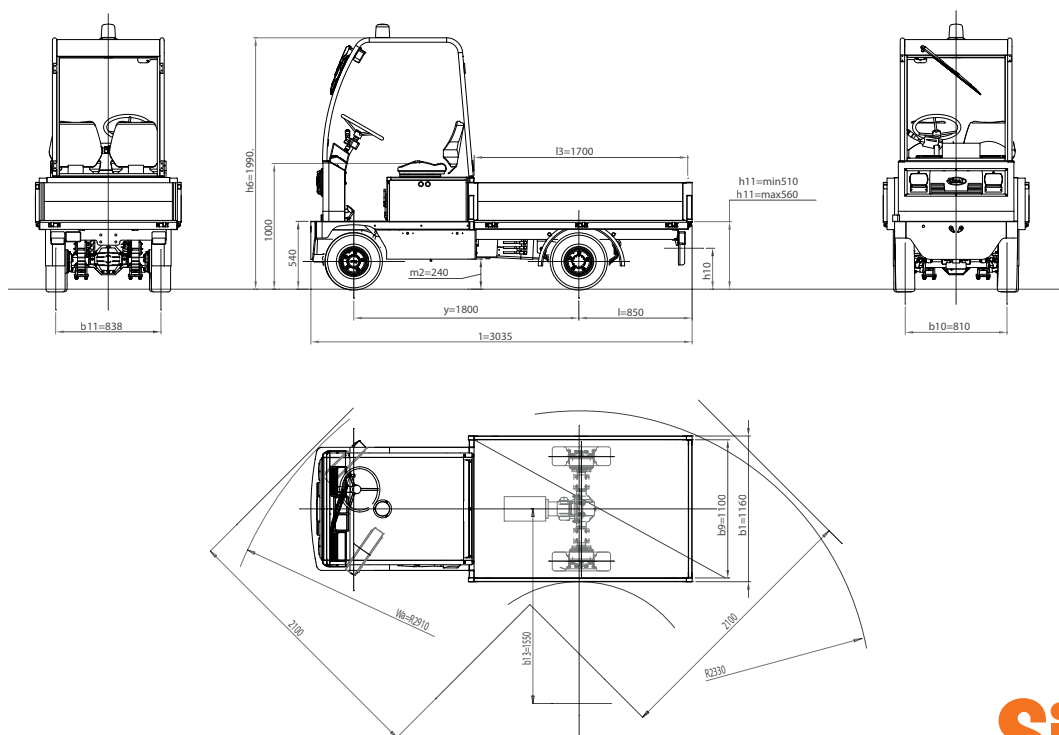


4-wheel platform truck, man on board, with rear-wheel drive. Extremely compact and easy to drive, ideal for all duties - both indoors and outdoors, even on long distances. The platform of the PE15 truck can be completed with other equipment.

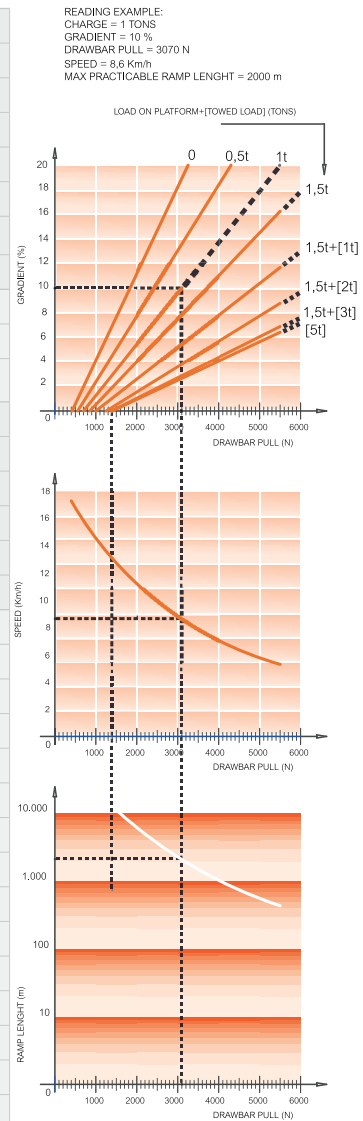
- **Central chassis.**
- Steel plate **platform** size 1,700x1,100 mm - other sizes available upon request. Aluminium tipping side walls h 300 mm available upon request.
- **Suspensions:** rubberised steel coil springs in the front, semi-elliptical leaf springs in the rear.
- **Drum service brake** acting on 4 wheels with twofold braking system. Electromagnetic parking brake. Preset electrical braking, operating automatically when accelerator pedal is released, with first stroke of brake pedal and on reversing direction.
- Standard hydraulic **steering**.
- **1 operator on board.** Optimised driving position for maximum comfort and efficiency as well as user-friendly and ergonomic dashboard. Passenger seat available upon request.
- **"Man on board" device** with pedal. Available in basic version, with weather protection roof with front windscreen and electric wipers. PVC canvas doors or cab with hinged side doors available.

- **Lighting system:** 2 front lights (position/dipped-beam/main-beam), 2 front turn indicators, 2 rear turn indicators, 2 rear lights (position/brake lights). Horn. Flashing light, reversing light and blue lights available upon request.
- **Digital dashboard** with battery charge indicator, fault detection, speedometer and hour meter. 24 V DC/DC converter for auxiliary services.
- **Induction motor** equipped with encoder, thermal probes and negative electromagnetic parking brake with manual brake disengage lever.
- **Electronic speed control of AC motor** with energy recovery during deceleration and braking. Towing hitch available upon request.
- **Battery** 48 V 300Ah. Standard paint finish: chassis dark grey RAL 7021/body light grey RAL 7035. Other colours available upon request.

All parts are easy to access for fast and effective maintenance. Lower costs due to AC technology and modular design.



FEATURES	1.1	Manufacturer			SIMAI S.p.A.	
	1.2	Model			PE15	
	1.3	Drive			electric	
	1.4	Operator Type			Sitting driver	
	1.5	Load Capacity	Q	t	1,5	
	1.5.1	Towing Capacity	Q	t	5	
	1.7	Rated Drawbar pull	F	N	1400	
	1.9	Wheelbase	Y	mm	1800	
	WEIGHT	2.1	Service weight (w/battery)		Kg	1243
2.2		Axle loading laden front/rear (with operator 80 kg. each)		Kg	783 / 2120	
2.3		Axle loading unladen front/rear		Kg	673 / 570	
TIRES, CHASSIS	3.1	Tyres:Cushion(Cu),Superelastic(SE), Pneus(Pn) Poliurethane (PE)			SE/Pn	
	3.2	Tyre size front			5.00-8	
	3.3	Tyre size rear			5.00-8	
	3.5	Wheels nr. Front/Rear (X=motive)			2/2X	
	3.6	Tread front	b_{10}	mm	810	
	3.7	Tread rear	b_{11}	mm	838	
	DIMENSIONS	4.7	Height of roof/cabin	h_6	mm	2010
4.8		Seat height	h_7	mm	1000	
4.8.1		Step on platform height		mm	540	
4.12		Coupling height	h_{10}	mm	410	
4.13		Loading height (min / MAX)	h_{11}	mm	400/560	
4.16		Platform length	l_3	mm	1700	
4.17		Rear overhang	l_5	mm	850	
4.18		Platform width	b_9	mm	1100	
4.19		Overall length	l_1	mm	3035	
4.21		Overall width	b_1	mm	1160	
4.32		Ground clearance - centre of wheelbase	m_2	mm	240	
4.35		Turning radius front	W_a	mm	2910	
4.35.1		Turning radius rear		mm	2330	
4.36		Turning radius inner	b_{13}	mm	970	
4.36.1		Aisle width when turning 90°		mm	2100	
PERFORMANCES	5.1	Travel speed laden/unladen		Km/h	15 / 17	
	5.5	Drawbar pull laden		N	560	
	5.5.1	Drawbar pull unladen		N	1400	
	5.6	Max. Drawbar pull laden/unladen		N	- / 5500	
	5.7	Gradeability laden/unladen		%	See chart	
	5.8	Max. Gradeability laden/unladen		%	See chart	
	5.10	Service / Parking brake (I=Hydraulic E=Electromagn. M=Mechanical)			I / E	
	5.10.1	Type of service brake front/rear			Drum / drum	
	MOTOR	6.1	Drive motor rating S2=60 min		kW	5
		6.1.1	Hydrauling steering motor rating S2=60 min		kW	1,2
6.3		Battery according to DIN 43531 / 35 / 36 A, B, C, no			no	
6.4		Battery voltage	U	V	48	
6.4.1		Battery rated capacity	K_5	Ah	240 - 260 - 300	
6.5		Battery weight		Kg	438 - 465 - 515	
6.6		Energy consumption (VDI cycle)		kWh/h	-	
OTHER DATA	8.1	Drive Control			inverter A/C	
	8.4	Sound level at driver's ear according to DIN 12053		dB(A)	69	
	8.5	Towing coupling, type DIN			-	



As per VDI guidelines 2198, this datasheet applies to standard electric tractor / platform truck only.

Dimensions are not binding and can be changed in any moment. The performances must be intended for brand new machines, after having completed the running-in tested in San Donato Milanese Factory in normal climatic conditions. Performances and weight are to be intended with standard motors and battery (reported in bold) and with pneumatic tires. Some data can vary according to different equipments.

Simai S.p.A.

Via Civesio, 10 • 20097 S. Donato Milanese (MI) • Italy
T +39 02 5278541 • F +39 02 5278544 • info@simai.it • www.simai.it



Simai

06E0418