

Electric Platform Truck

PE20

Loading Capacity 2000 kg

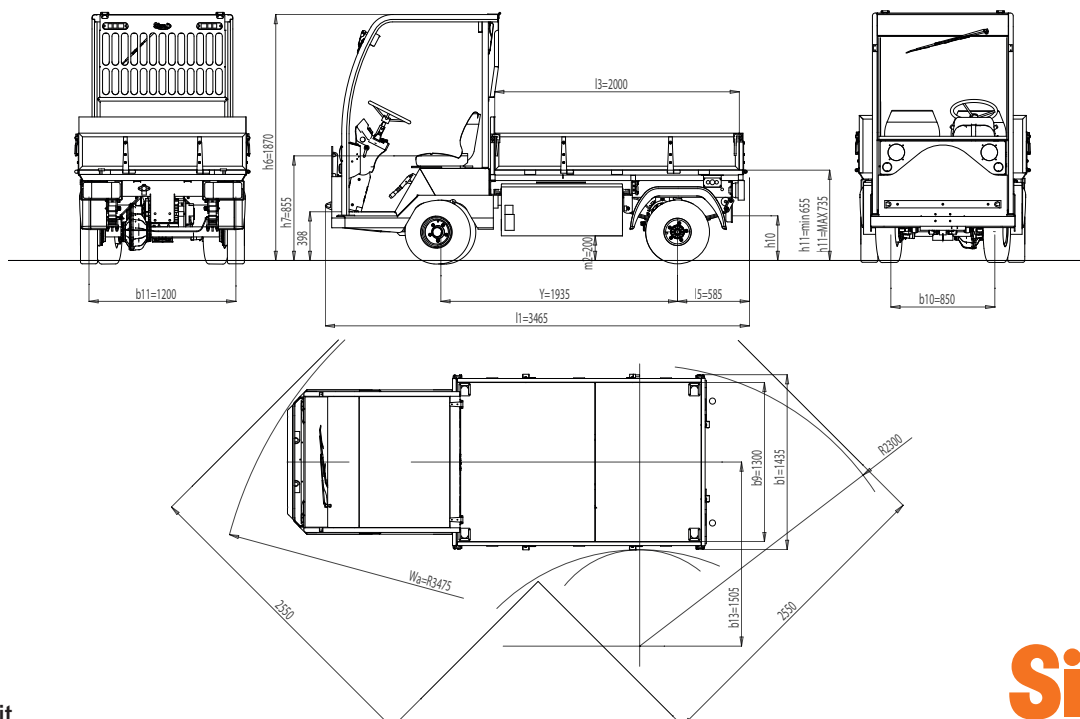


4-wheel platform truck, man on board, with rear-wheel drive. Extremely compact and easy to drive, ideal for all duties - both indoors and outdoors, even on long distances. The platform of the PE20 truck can be completed with other equipment.

- **Central chassis.**
- Phenol-resin bonded plywood **platform** size 2,000x1,300 mm - other sizes and materials available upon request. Aluminium tipping side walls h 300 mm available upon request.
- **Suspensions:** rubberised steel coil springs in the front, semi-elliptical leaf springs in the rear.
- **Drum service brake** acting on 4 wheels with twofold braking system. Electromagnetic and mechanical lever-type parking brake. Preset electrical **braking**, operating automatically when accelerator pedal is released, with first stroke of brake pedal and on reversing direction.
- Standard hydraulic **steering**.
- **2 operators on board.** Optimised driving position for maximum comfort and efficiency, low step-on platform for comfortable access as well as user-friendly and ergonomic dashboard.
- **"Man on board" device** with seat occupancy sensor. Available in basic version, with weather protection roof with front windscreen and electric wipers. PVC canvas doors or cab with hinged side doors available.

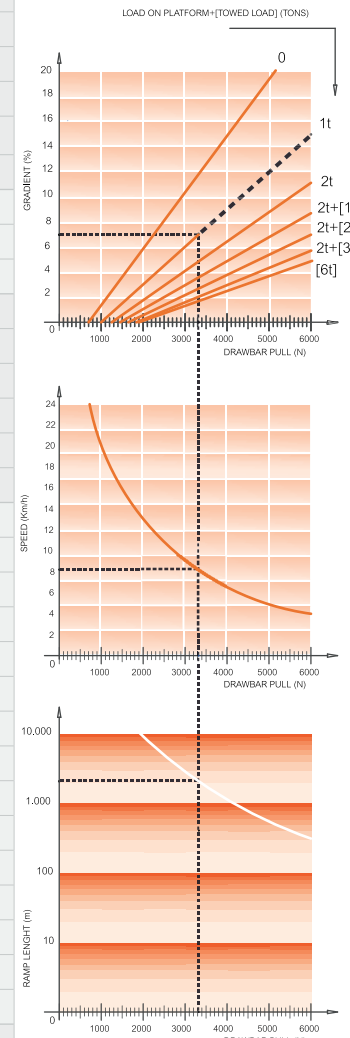
- **Lighting system:** 2 front lights (position/dipped-beam/main-beam), 2 front turn indicators, 2 rear turn indicators, 2 rear lights (position/brake lights). Horn. Flashing light, reversing light and blue lights available upon request.
- **Digital dashboard** with battery charge indicator, fault detection, speedometer and hour meter. 24 V DC/DC converter for auxiliary services.
- **Induction motor** equipped with encoder, thermal probes and negative electromagnetic parking brake with manual brake disengage lever.
- **Electronic speed control of AC motor** with energy recovery during deceleration and braking. Available also with towing hitch upon request.
- **Battery** in two containers 48 V – available capacity 360Ah, 420Ah and 480Ah. Fast replacement from the side. Standard paint finish: chassis dark grey RAL 7021/body light grey RAL 7035. Other colours available upon request.

All parts are easy to access for fast and effective maintenance. Lower costs due to AC technology and modular design.



FEATURES	1.1	Manufacturer				SIMAI S.p.A.
	1.2	Model				PE20
	1.3	Drive				electric
	1.4	Operator Type				Sitting driver
	1.5	Load Capacity	Q	t		2
	1.5.1	Towing Capacity	Q	t		6
	1.7	Rated Drawbar pull	F	N		1750
	1.9	Wheelbase	Y	mm		1935
	WEIGHT	2.1	Service weight (w/battery)			kg
2.2		Axle loading laden front/rear (with operator 80 kg. each)			kg	1815 / 2475
2.3		Axle loading unladen front/rear			kg	1130 / 1000
TIRES, CHASSIS	3.1	Tyres:Cushion(Cu),Superelastic(SE), Pneus(Pn) Poliurethane (PE)				SE/Pn
	3.2	Tyre size front				6.00-9
	3.3	Tyre size rear				6.00-9
	3.5	Wheels nr. Front/Rear (X=motive)				2/2X
	3.6	Tread front	b ₁₀	mm		850
	3.7	Tread rear	b ₁₁	mm		1200
DIMENSIONS	4.7	Height of roof/cabin	h ₆	mm		1870
	4.8	Seat height	h ₇	mm		855
	4.8.1	Step on platform height		mm		398
	4.12	Coupling height	h ₁₀	mm		355
	4.13	Loading height (min / MAX)	h ₁₁	mm		655/735
	4.16	Platform length	l ₃	mm		2000
	4.17	Rear overhang	l ₅	mm		1300
	4.18	Platform width	b ₉	mm		585
	4.19	Overall length	l ₁	mm		3465
	4.21	Overall width	b ₁	mm		1435
	4.32	Ground clearance - centre of wheelbase	m ₂	mm		200
	4.35	Turning radius front	Wa	mm		3475
	4.35.1	Turning radius rear		mm		2300
	4.36	Turning radius inner	b ₁₃	mm		790
	4.36.1	Aisle width when turning 90°		mm		2550
PERFORMANCES	5.1	Travel speed laden/unladen			Km/h	18 / 23
	5.5	Drawbar pull laden			N	600
	5.5.1	Drawbar pull unladen			N	1750
	5.6	Max. Drawbar pull laden/unladen			N	- / 6100
	5.7	Gradeability laden/unladen			%	See chart
	5.8	Max. Gradeability laden/unladen			%	See chart
	5.10	Service / Parking brake (I=Hydraulic E=Electromagn. M=Mechanical)				I / M
	5.10.1	Type of service brake front/rear				Drum / drum
MOTOR	6.1	Drive motor rating S2=60 min			kW	7
	6.1.1	Hydrauling steering motor rating S2=60 min			kW	1,2
	6.3	Battery according to DIN 43531 / 35 / 36 A, B, C, no				no
	6.4	Battery voltage	U	V		48
	6.4.1	Battery rated capacity	K ₅	Ah		480
	6.5	Battery weight		kg		830
	6.6	Energy consumption (VDI cycle)		kWh/h		-
OTHER DATA	8.1	Drive Control				inverter A/C
	8.4	Sound level at driver's ear according to DIN 12053			dB(A)	69
	8.5	Towing coupling, type DIN				-

READING EXAMPLE:
CHARGE = 1 TONS
GRADIENT = 7 %
DRAWBAR PULL = 3330 N
SPEED = 8.2 Km/h
MAX PRACTICABLE RAMP LENGHT = 2000 m



As per VDI guidelines 2198, this datasheet applies to standard electric tractor / platform truck only.

Dimensions are not binding and can be changed in any moment. The performances must be intended for brand new machines, after having completed the running-in tested in San Donato Milanese Factory in normal climatic conditions. Performances and weight are to be intended with standard motors and battery (reported in bold) and with pneumatic tires. Some data can vary according to different equipments.

Simai S.p.A.

Via Civesio, 10 • 20097 S. Donato Milanese (MI) • Italy
T +39 02 5278541 • F +39 02 5278544 • info@simai.it • www.simai.it



Simai

071E0418