

Electric Platform Truck

PE30

Loading Capacity 3000 kg

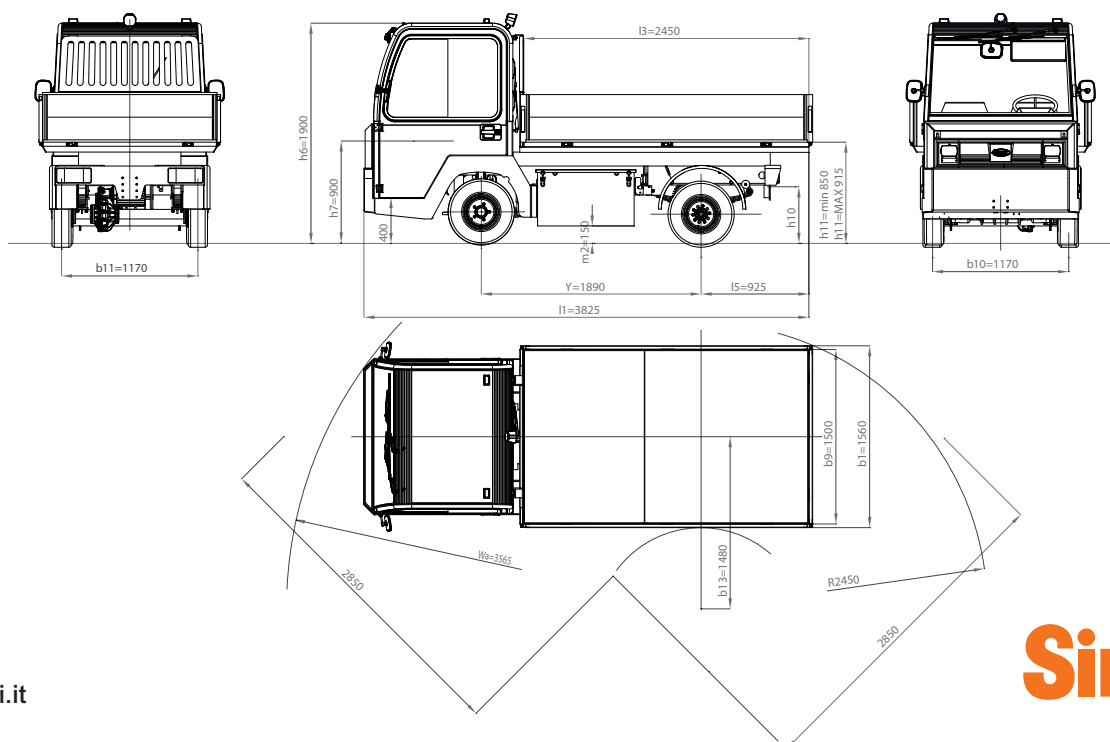


4-wheel platform truck, man on board, with rear-wheel drive. Extremely easy to drive, ideal for all duties - both indoors and outdoors, even on long distances. The platform of the PE30 truck can be completed with other equipment.

- **Central chassis.**
- Phenol-resin bonded plywood **platform** size 2,450x1500 mm - other sizes and materials available upon request. Aluminium tipping side walls h 400 mm available upon request.
- **Suspensions:** rubberised steel coil springs, stabiliser bar and shock absorbers in the front, semi-elliptical leaf springs in the rear.
- **Drum service brake** acting on 4 wheels - with twofold braking system. Front disk brakes and rear oil-bath multiple-disk brakes. Mechanical lever-type parking brake - negative hydraulic brake available upon request. Preset electrical **braking**, operating automatically when accelerator pedal is released, with first stroke of brake pedal and on reversing direction.
- Standard hydraulic **steering**.
- **2 operators on board.** Driving position in the front ensures excellent rear and front visibility. Suspension seats. Easy access to driving position thanks to low step-on platform.

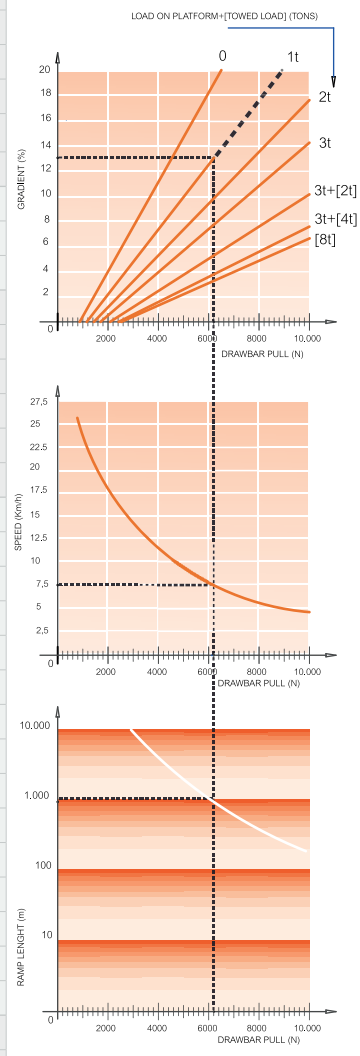
- **"Man on board" device** with seat occupancy sensor. Available with weather protection roof with front and rear windscreen and electric wipers. PVC canvas doors or cab with hinged side doors available.
- **Lighting system:** 2 front lights (position/dipped-beam/main-beam), 2 front turn indicators, 2 rear turn indicators, 2 rear lights (position/brake lights), 2 reversing lights. Flashing light and blue lights available upon request.
- **Digital dashboard** with battery charge indicator, fault detection, speedometer and hour meter. 24 V DC/DC converter for auxiliary services.
- **Induction motor.**
- **Electronic speed control of AC motor** with energy recovery during deceleration and braking. Available also with towing hitch upon request.
- **Battery** 80 V - available capacity 400Ah and 480Ah. Fast replacement from the side. Standard paint finish: chassis dark grey RAL 7021/body light grey RAL 7035. Other colours available upon request.

All parts are easy to access for fast and effective maintenance. Lower costs due to AC technology and modular design.



| | | | | | |
|----------------|----------------------------------|---|----------------------------|----------------|--------------------|
| FEATURES | 1.1 | Manufacturer | | | SIMAI S.p.A. |
| | 1.2 | Model | | | PE30 |
| | 1.3 | Drive | | | electric |
| | 1.4 | Operator Type | | | Sitting driver |
| | 1.5 | Load Capacity | Q | t | 3 |
| | 1.5.1 | Towing Capacity | Q | t | 8 |
| | 1.7 | Rated Drawbar pull | F | N | 2400 |
| | 1.9 | Wheelbase | Y | mm | 1890 |
| | WEIGHT | 2.1 | Service weight (w/battery) | | Kg |
| 2.2 | | Axle loading laden front/rear (with operator 80 kg. each) | | Kg | 2300 / 3610 |
| 2.3 | | Axle loading unladen front/rear | | Kg | 1500 / 1250 |
| TIRES; CHASSIS | 3.1 | Tyres:Cushion(Cu),Superelastic(SE), Pneus(Pn) Poliurethane (PE) | | | SE/Pn |
| | 3.2 | Tyre size front | | | 6.50-10 |
| | 3.3 | Tyre size rear | | | 6.50-10 |
| | 3.5 | Wheels nr. Front/Rear (X=motive) | | | 2 / 2X |
| | 3.6 | Tread front | b ₁₀ | mm | 1170 |
| | 3.7 | Tread rear | b ₁₁ | mm | 1170 |
| | DIMENSIONS | 4.7 | Height of roof/cabin | h ₆ | mm |
| 4.8 | | Seat height | h ₇ | mm | 900 |
| 4.8.1 | | Step on platform height | | mm | 400 |
| 4.12 | | Coupling height | h ₁₀ | mm | 425 - 480 - 535 |
| 4.13 | | Loading height (min / MAX) | h ₁₁ | mm | 850 / 915 |
| 4.16 | | Platform length | l ₃ | mm | 2450 |
| 4.17 | | Rear overhang | l ₅ | mm | 925 |
| 4.18 | | Platform width | b ₉ | mm | 1500 |
| 4.19 | | Overall length | l ₁ | mm | 3825 |
| 4.21 | | Overall width | b ₁ | mm | 1560 |
| 4.32 | | Ground clearance - centre of wheelbase | m ₂ | mm | 150 |
| 4.35 | | Turning radius front | Wa | mm | 3565 |
| 4.35.1 | | Turning radius rear | | mm | 2450 |
| 4.36 | | Turning radius inner | b ₁₃ | mm | 1480 |
| 4.36.1 | | Aisle width when turning 90° | | mm | 2850 |
| PERFORMANCES | 5.1 | Travel speed laden/unladen | | Km/h | 19 / 25 |
| | 5.5 | Drawbar pull laden | | N | 1500 |
| | 5.5.1 | Drawbar pull unladen | | N | 2400 |
| | 5.6 | Max. Drawbar pull laden/unladen | | N | - / 9500 |
| | 5.7 | Gradeability laden/unladen | | % | See chart |
| | 5.8 | Max. Gradeability laden/unladen | | % | See chart |
| | 5.10 | Service / Parking brake (I=Hydraulic E=Electromagn. M=Mechanical) | | | I / M |
| 5.10.1 | Type of service brake front/rear | | | Disk / drum | |
| MOTOR | 6.1 | Drive motor rating S2=60 min | | kW | 12 |
| | 6.1.1 | Hydrauling steering motor rating S2=60 min | | kW | 1 (Ac) |
| | 6.3 | Battery according to DIN 43531 / 35 / 36 A, B, C, no | | | no |
| | 6.4 | Battery voltage | U | V | 80 |
| | 6.4.1 | Battery rated capacity | K _s | Ah | 350 - 400 - 480 |
| | 6.5 | Battery weighth | | Kg | 1080 - 1120 - 1250 |
| | 6.6 | Energy consumption (VDI cycle) | | kWh/h | - |
| OTHER DATA | 8.1 | Drive Control | | | inverter AC |
| | 8.4 | Sound level at driver's ear according to DIN 12053 | | dB(A) | 69 |
| | 8.5 | Towing coupling, type DIN | | | - |

READING EXAMPLE:
 CHARGE = 1 TONS
 GRADIENT = 13 %
 DRAWBAR PULL = 6200 N
 SPEED = 7,6 Km/h
 MAX PRACTICABLE RAMP LENGHT = 1000 m



As per VDI guidelines 2198, this datasheet applies to standard electric tractor / platform truck only. Dimensions are not binding and can be changed in any moment. The performances must be intended for brand new machines, after having completed the running-in tested in San Donato Milanese Factory in normal climatic conditions. Performances and weight are to be intended with standard motors and battery (reported in bold) and with pneumatic tires. Some data can vary according to different equipments.

