

# Electric Platform Truck

## PE15.1

Loading Capacity 1500 kg



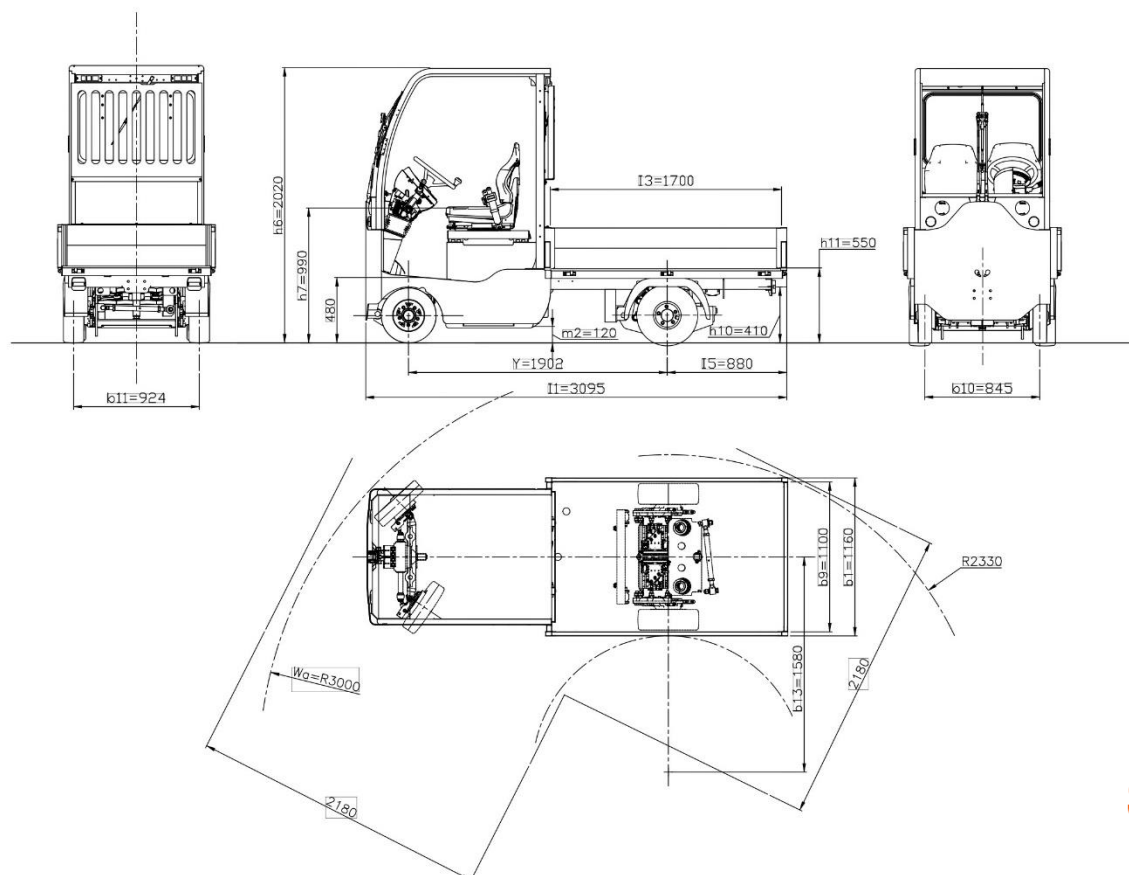
4-wheel platform truck, man on board, with rear-wheel drive. Extremely compact and easy to drive, ideal for all duties – both indoors and outdoors, even on long distances. The platform of the PE15.1 truck can be completed with other equipment.

- **Central chassis.**

- Steel plate **platform** size 1.700x1.100 mm – other sizes available upon request.
- **Suspensions:** front and rear axles, front with steel helical springs, rear with steel helical springs, hydraulic shock-absorbers and stabilizer bar.
- **Service brake** on all 4 wheels, front drum brakes, rear wet disks (multiple disks in oil bath in a closed compartment – maintenance – free). Electronic brake engaged when releasing the accelerator pedal and/or pushing the first stroke of the brake pedal. Hydraulic service brake engaged when pushing the brake pedal. Double circuit: is divided in two parallel parts, if one fails, the other keeps working allowing to bring unit to maintenance/recovery point in safety.
- **Standard hydraulic steering.**
- **1 operator on board.** Optimised driving position for maximum comfort and efficiency as well as user-friendly and ergonomic dashboard. Passenger seat available upon request.
- **“Man on board” device under driver’s seat.** Available in basic version, with weather protection roof with front windscreen and electric wipers. PVC canvas doors or cab with hinged side doors available.

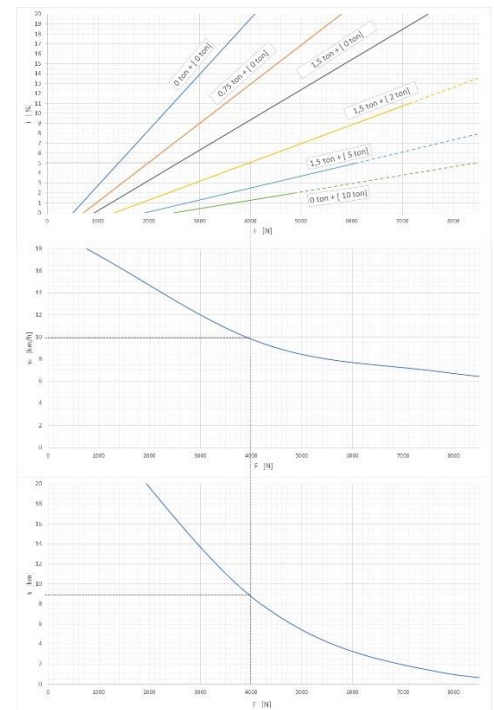
- **Lighting system:** 2 front lights (position/dipped-beam/main-beam), 2 front turn indicators, 2 rear turn indicators, 2 rear lights (position/brake lights). Horn. Flashing light, reversing light and blue lights available upon request.
- **Digital dashboard** with the battery charge indicator, fault detection, speedometer and hour meter. 24 V DC/DC converter for auxiliary services.
- **Induction motor** equipped with encoder, thermal probes and negative electromagnetic parking brake with manual brake disengage lever.
- **Electronic speed control of AC motor** with energy recovery during deceleration and braking. Towing hitch available upon request.
- **Battery DIN 43531A 48 V 420-460-500Ah**  
Standard paint finish: chassis dark grey RAL 7021 /body light grey RAL 7035. Other colours available upon request.

All parts are easy to access for fast and effective maintenance, Lower costs due to AC technology and modular design.



Features	1.1	Manufacturer			SIMAI S.p.A.	
	1.2	Model			PE15.1	
	1.3	Drive			Electric	
	1.4	Operator Type			Sitting driver	
	1.5	Load Capacity	Q	t	1,5	
	1.5.1	Towing Capacity	Q	t	10	
	1.7	Rated Drawbar pull	F	N	2200	
	1.9	Wheelbase	Y	mm	1900	
	Weights	2.1	Service weight (w/battery)		kg	1645
2.2		Axle loading laden front/rear (with operator 80 kg. each)		kg	1000 / 2220	
2.3		Axle loading unladen front/rear		kg	925 / 720	
Tyres - Chassis	3.1	Tyres: Cushion(Cu), Superelastic(SE), Pneus(Pn) Poliurethane (PE)			SE/Pn	
	3.2	Tyre size front			4.00-8	
	3.3	Tyre size rear			18*7-8	
	3.5	Wheels nr. Front/Rear (X=motive)			2/2X	
	3.6	Tread front	b <sub>10</sub>	mm	845	
	3.7	Tread rear	b <sub>11</sub>	mm	884	
	Dimansions	4.7	Height of roof/cabin	h <sub>6</sub>	mm	2020
4.8		Seat height	h <sub>7</sub>	mm	990	
4.8.1		Step on platform height		mm	480	
4.12		Coupling height	h <sub>10</sub>	mm	410	
4.13		Loading height (min / MAX)	h <sub>11</sub>	mm	550	
4.16		Platform length	l <sub>3</sub>	mm	1700	
4.17		Rear overhang	l <sub>6</sub>	mm	850	
4.18		Platform width	b <sub>9</sub>	mm	1100	
4.19		Overall length	l <sub>1</sub>	mm	3065	
4.21		Overall width	b <sub>1</sub>	mm	1160	
4.32		Ground clearance - centre of wheelbase	m <sub>2</sub>	mm	120	
4.35		Turning radius front	Wa	mm	2850	
4.35.1		Turning radius rear		mm	2100	
4.36		Turning radius inner	b <sub>13</sub>	mm	1300	
4.36.1		Aisle width when turning 90°		mm	2180	
Performances		5.1	Travel speed laden/unladen		km/h	15 / 18
		5.5	Drawbar pull laden		N	-
	5.5.1	Drawbar pull unladen		N	2200	
	5.6	Max. Drawbar pull laden/unladen		N	- / 8000	
	5.7	Gradeability laden/unladen		%	See chart	
	5.8	Max. Gradeability laden/unladen		%	See chart	
	5.10	Service / Parking brake (I=Hydraulic E=Electromagn. M=Mechanical)			I / E	
5.10.1	Type of service brake front/rear			Drum / wet brakes		
Motor	6.1	Drive motor rating S2=60 min		kW	2 x 6,6	
	6.1.1	Hydrauling steering motor rating S2=60 min		kW	0,6 (Ac)	
	6.3	Battery according to DIN 43531 / 35 / 36 A, B, C, no			43531 A	
	6.4	Battery voltage	U	V	48	
	6.4.1	Battery rated capacity	K <sub>5</sub>	Ah	420-460-500	
	6.5	Battery weighth		kg	667-700-731	
	6.6	Energy consumption (VDI cycle)		kWh/h	-	
Other d	8.1	Drive Control			inverter AC	
	8.4	Sound level at driver's ear according to DIN 12053		dB(A)	69	
	8.5	Towing coupling, type DIN			-	

READING EXAMPLE  
LOADING CAPACITY + TRAILED  
LOAD = 1.5 tons + [2 ton]  
GRADIENT (i) = 5 %  
DRAWBALL PULL (F) = 4000 N  
SPEED (V0) = 10 [km/h]  
MAX PRACTICABLE RAMP LENGHT (s) = 9 km



As per VDI guidelines 2198, this datasheet applies to standard electric tractor / platform truck only. Dimensions are not binding and can be changed in any moment. The performances must be intended for brand new machines, after having completed the running-in tested in San Donato Milanese Factory in normal climatic conditions. Performances and weight are to be intended with standard motors and battery (reported in bold) and with pneumatic tires. Some data can vary according to different equipments.



Simai S.p.A.

Via Civesio, 10 • 20097 S. Donato Milanese (MI) • Italy  
T +39 02 94424211 • F 02 5231082 • info@simai.it



ASSOCIATA



www.simai.it